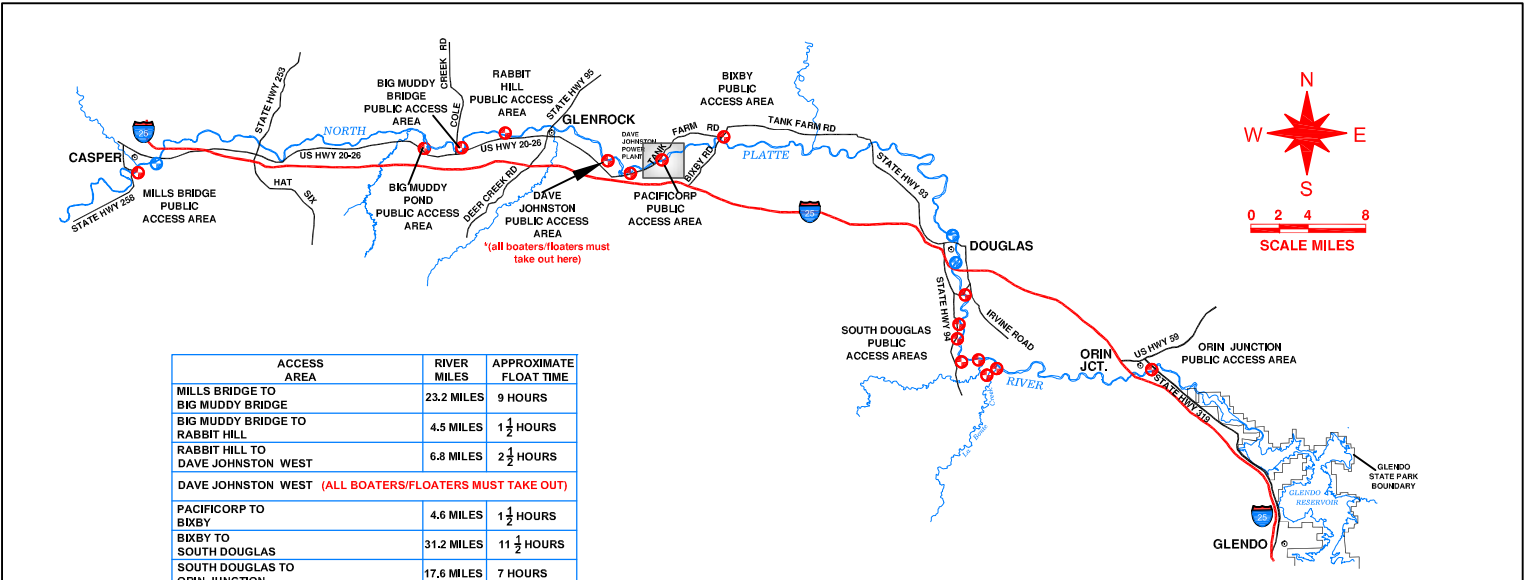
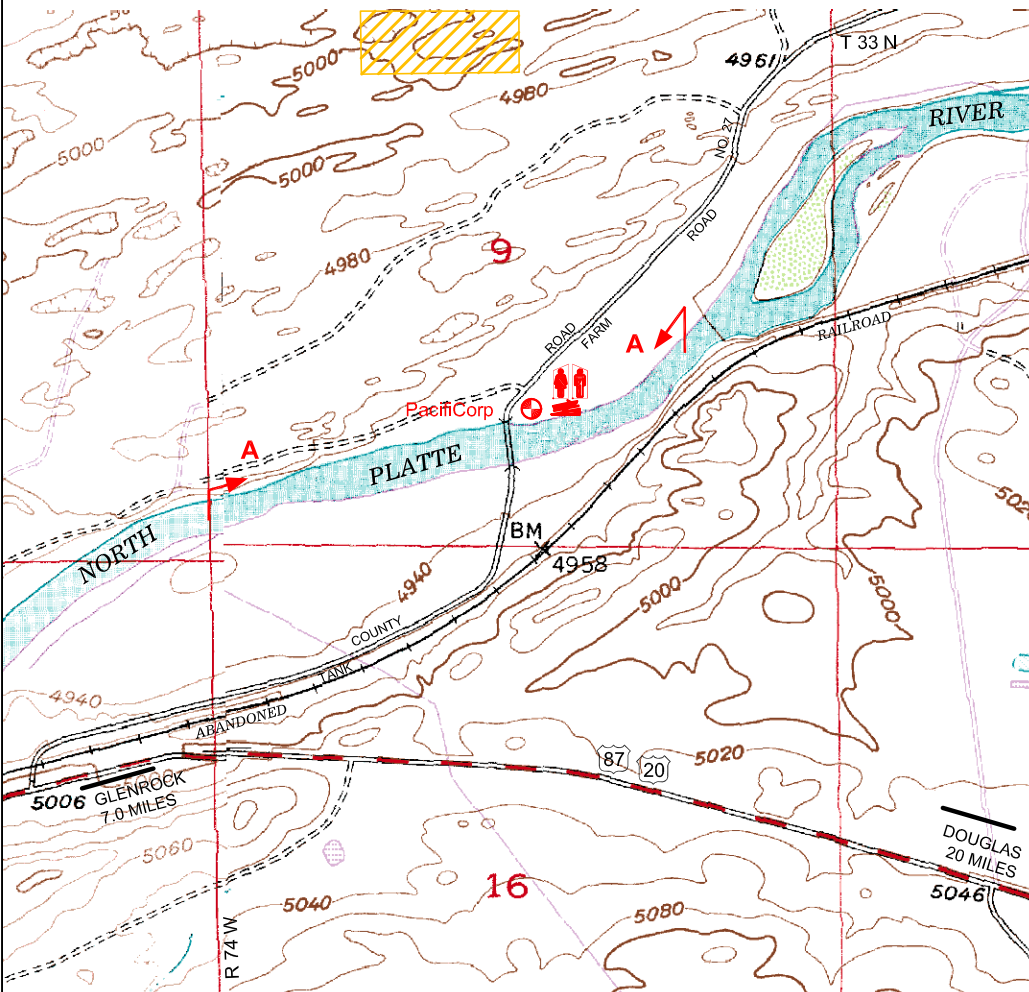


North Platte River - P.P. & L. Public Access Area



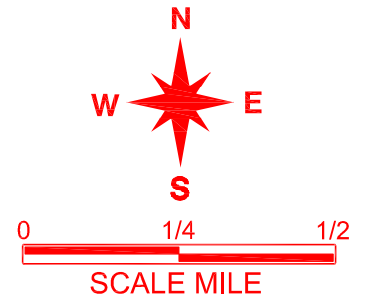
ACCESS AREA	RIVER MILES	APPROXIMATE FLOAT TIME
MILLS BRIDGE TO BIG MUDDY BRIDGE	23.2 MILES	9 HOURS
BIG MUDDY BRIDGE TO RABBIT HILL	4.5 MILES	1 1/2 HOURS
RABBIT HILL TO DAVE JOHNSTON WEST	6.8 MILES	2 1/2 HOURS
DAVE JOHNSTON WEST (ALL BOATERS/FLOATERS MUST TAKE OUT)		
PACIFICORP TO BIXBY	4.6 MILES	1 1/2 HOURS
BIXBY TO SOUTH DOUGLAS	31.2 MILES	11 1/2 HOURS
SOUTH DOUGLAS TO ORIN JUNCTION	17.6 MILES	7 HOURS

River miles are approximate. Floating times vary CONSIDERABLY due to weather conditions, water conditions and type of craft.



LEGEND

- BLM LAND
- PRIVATE LAND
- COMFORT STATION
- PARKING AREA
- PUBLIC ACCESS MANAGED BY OTHERS
- PEDESTRIAN ACCESS FOR FISHING EXTENDS 100 FT. ABOVE HIGH WATER LINE BETWEEN ARROWS
- BOAT LAUNCH



The purpose of the map illustrated is to identify --Access Areas. The map is not designed to provide accurate information on public and private land status. Land status is in a perpetual state of flux given exchange and/or sale of public and private lands. As a result, current status of land parcels marked as State, BLM, or Bureau of Reclamation, may be different than that represented in the base map. Please refer to the respective agencies for the current status of the land.