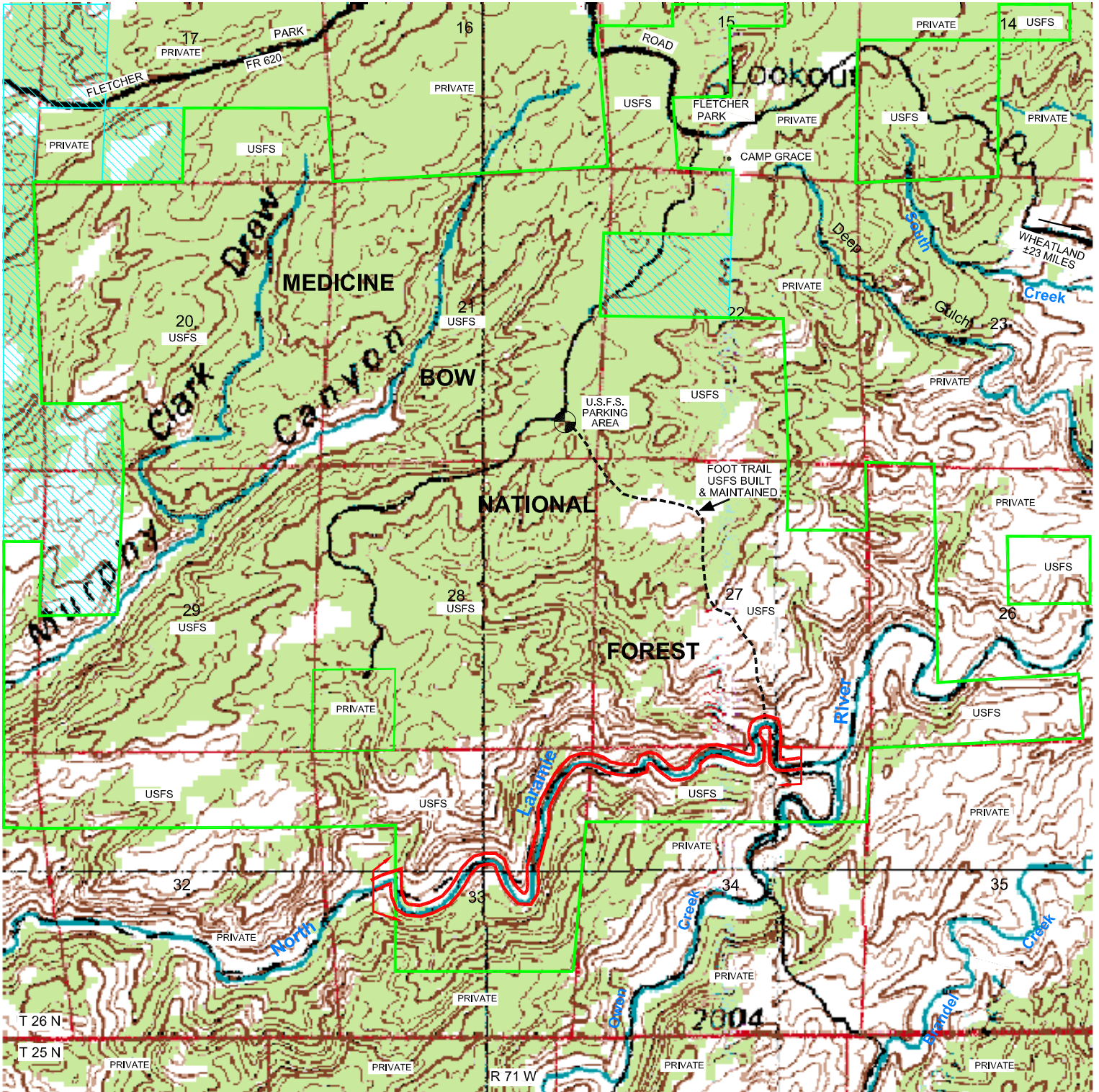
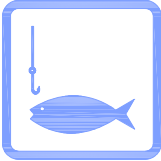


North Laramie - Funkhouser Public Access Area



LEGEND

- ACCESS BOUNDARY
- STATE LAND
- FOREST LAND
- USFS PARKING AREA
- USFS ACCESS TRAIL
- PUBLIC ACCESS FOR FISHING EXTENDS 33 FT. EITHER SIDE OF THE THREAD OF NORTH LARAMIE RIVER

