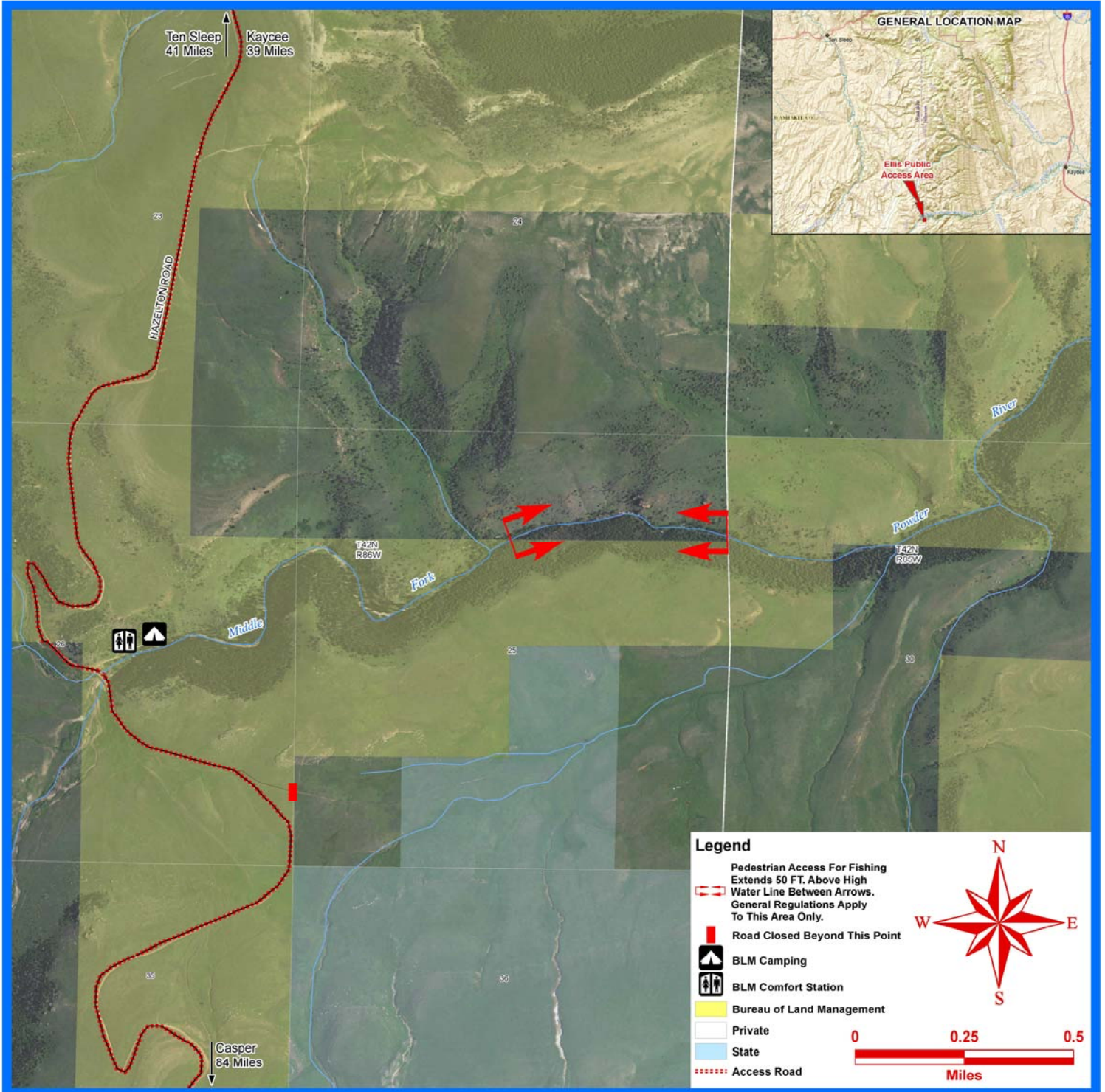
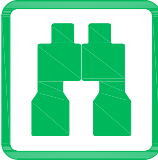
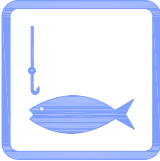
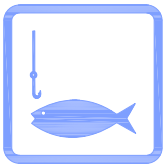


Middle Fork Powder River - Ellis Public Access Area



Middle Fork Powder River - Ellis Public Access Area



Middle Fork Powder River - Ellis Public Access Area

Access to the ELLIS Public Access Area can be obtained through the BLM Middle Fork of the Powder River Campground off of the Hazelton Rd,

http://www.blm.gov/wy/st/en/field_offices/Worland/rec/midcamp.html

Or by hiking upstream from the Ed O. Taylor WHMA. There is no maintained trail along the Middle Fork of the Powder River to access the Ellis PAA, No public camping, Fires or Fireworks allowed on the easement.