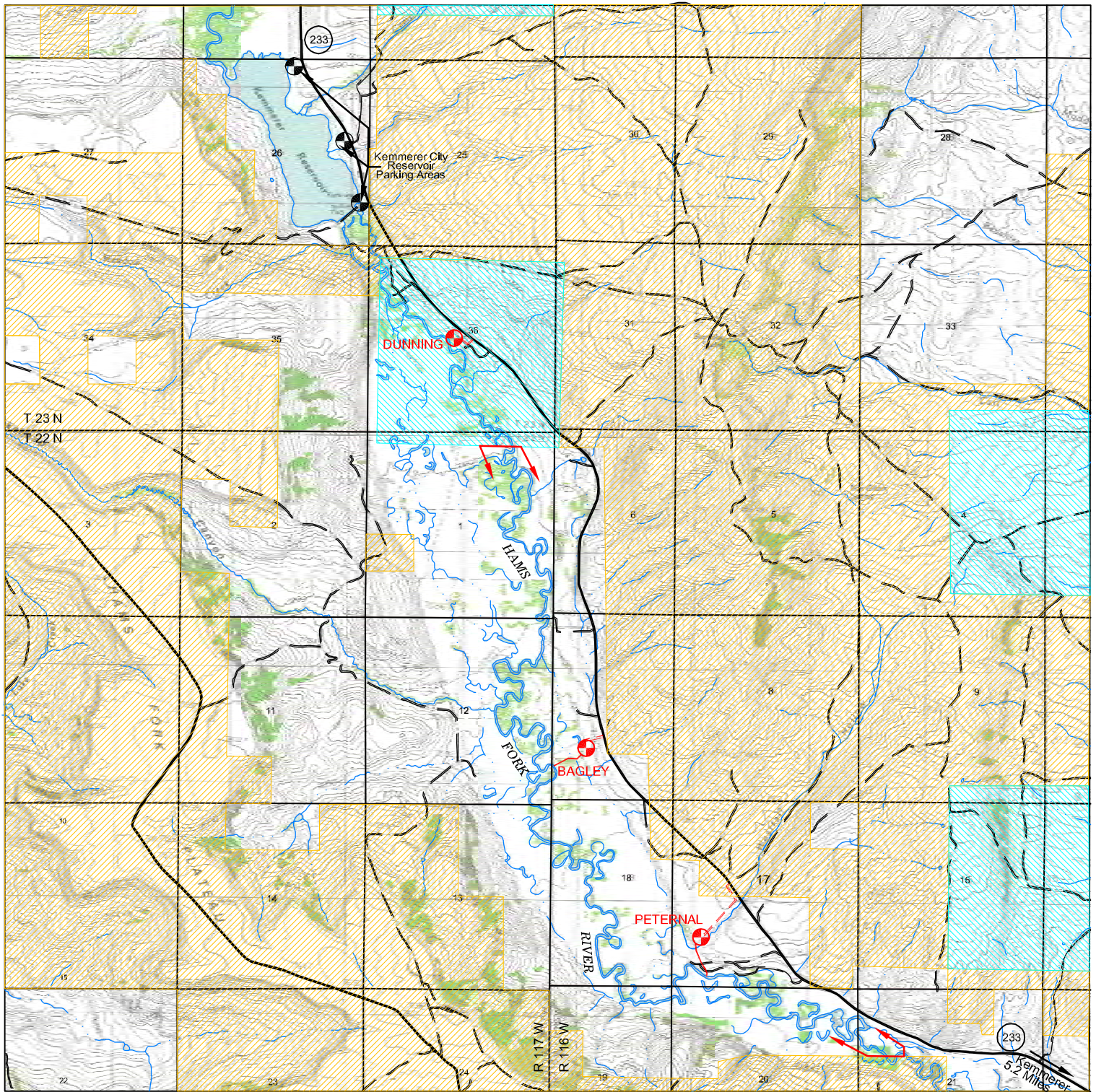
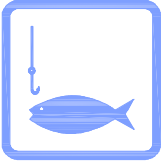


# Hams Fork River Public Access Area



## LEGEND



BLM LAND



PRIVATE LAND



ACCESS TRAIL



STATE LAND



PARKING AREA



ACCESS ROAD



PEDESTRIAN ACCESS FOR FISHING EXTENDS 50 FT. ABOVE HIGH WATER LINE BETWEEN ARROWS

