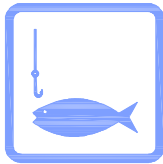
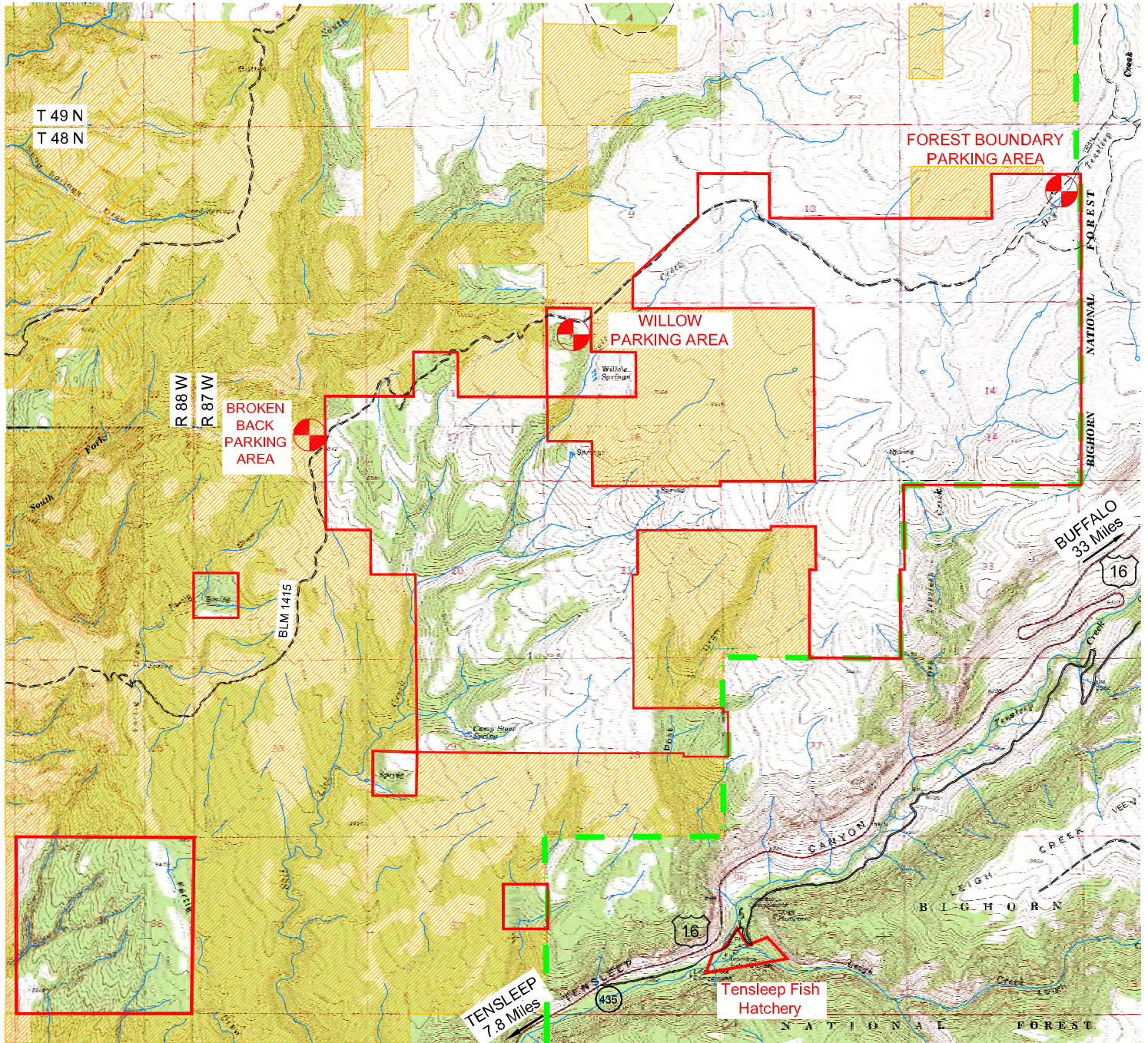







Carter/Billy Miles Public Access Areas & Tensleep Hatchery



Fishing at Tensleep only



LEGEND

-  ACCESS BOUNDARY
-  FOREST BOUNDARY
-  BLM LAND
-  PARKING AREA
-  PRIVATE LAND

Access Directions:

From Tensleep - 1.5 miles east of Tensleep on Hwy. 16, turn north at Carter/Miles sign along Hwy 16. (four wheel drive recommended)

From National Forest - Hwy. 16 at Haven Lodge, take FS Road 27 to FS Road 24, then FS Road 413. (four wheel drive only)



0 1/4 1/2
SCALE MILE