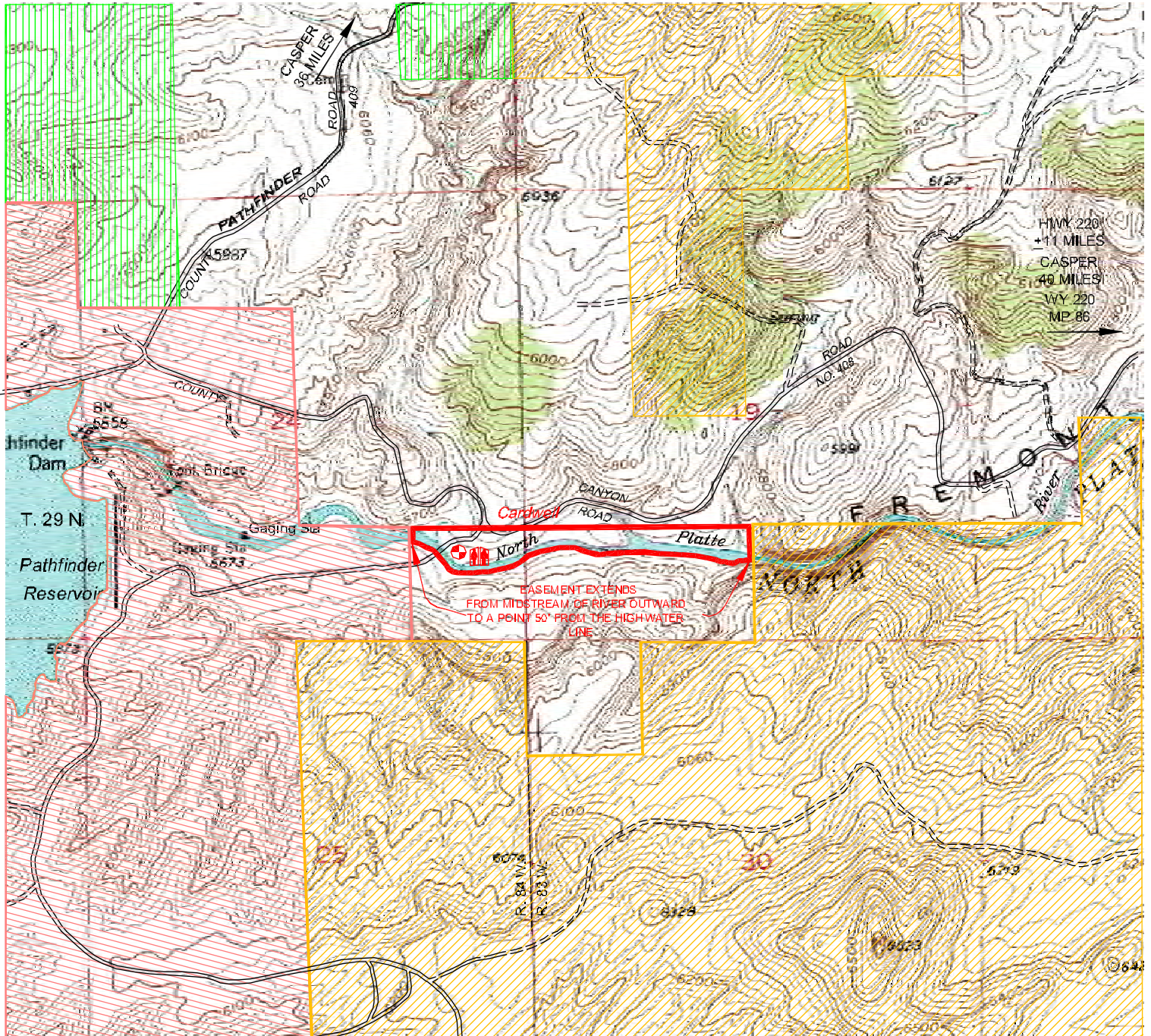
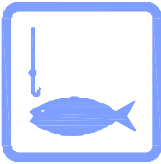






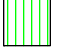


North Platte River - Cardwell Public Access Area



HWY 220
 +11 MILES
 CASPER
 49 MILES
 WY 220
 MP 86

BASEMENT EXTENDS
 FROM MIDSTREAM OF RIVER OUTWARD
 TO A POINT 50' FROM THE HIGHWATER
 LINE

LEGEND

- | | | | |
|--|-----------------|---|-----------------|
|  | ACCESS BOUNDARY |  | BOR LAND |
|  | BLM LAND |  | PARKING AREA |
|  | REFUGE |  | COMFORT STATION |
|  | PRIVATE LAND | | |

