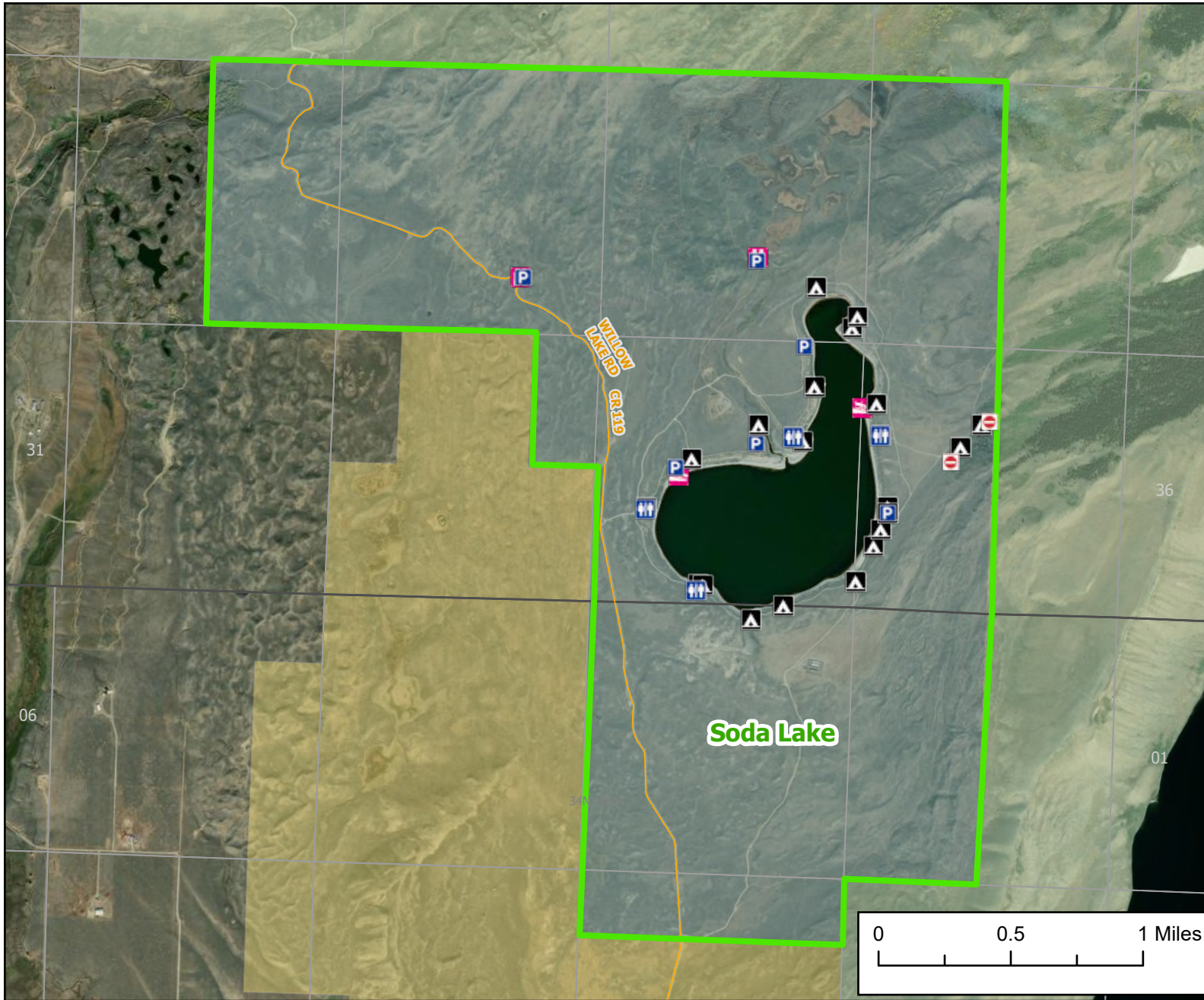




Soda Lake Wildlife Habitat Management Area



Recreation Options: Fishing, Hunting, Trapping, Camping, Hiking, Wildlife Viewing

Access Dates: THIS AREA OPENS TO ALL HUMAN PRESENCE AT 6:00AM MAY 1

Seasonal Closure: Dec. 1- May 1 at 6am

Access Exceptions:

Area Regulations: No human presence Dec. 1 - May 1 at 6am. 14 day camping limit. No fireworks. Motor vehicles restricted to roads marked with white arrows. Certified weed free hay required.
Soda Lake wetlands closed May 1 - July 1 for nesting/brooding waterfowl. Cutting of firewood prohibited

Shed Limitations: No Collection of shed antlers or horns January 1- May 1 at 6:00 AM

Pheasant Release Dates:

This map is for visual use, assistance and general location only, does not represent a survey, and is not to be used for legal conveyance. Hunt Area boundaries are approximate, consult Game and Fish Hunting Regulations for descriptions and restrictions. Access to these private lands for any commercial activity must be gained by contacting the individual landowner(s) directly.