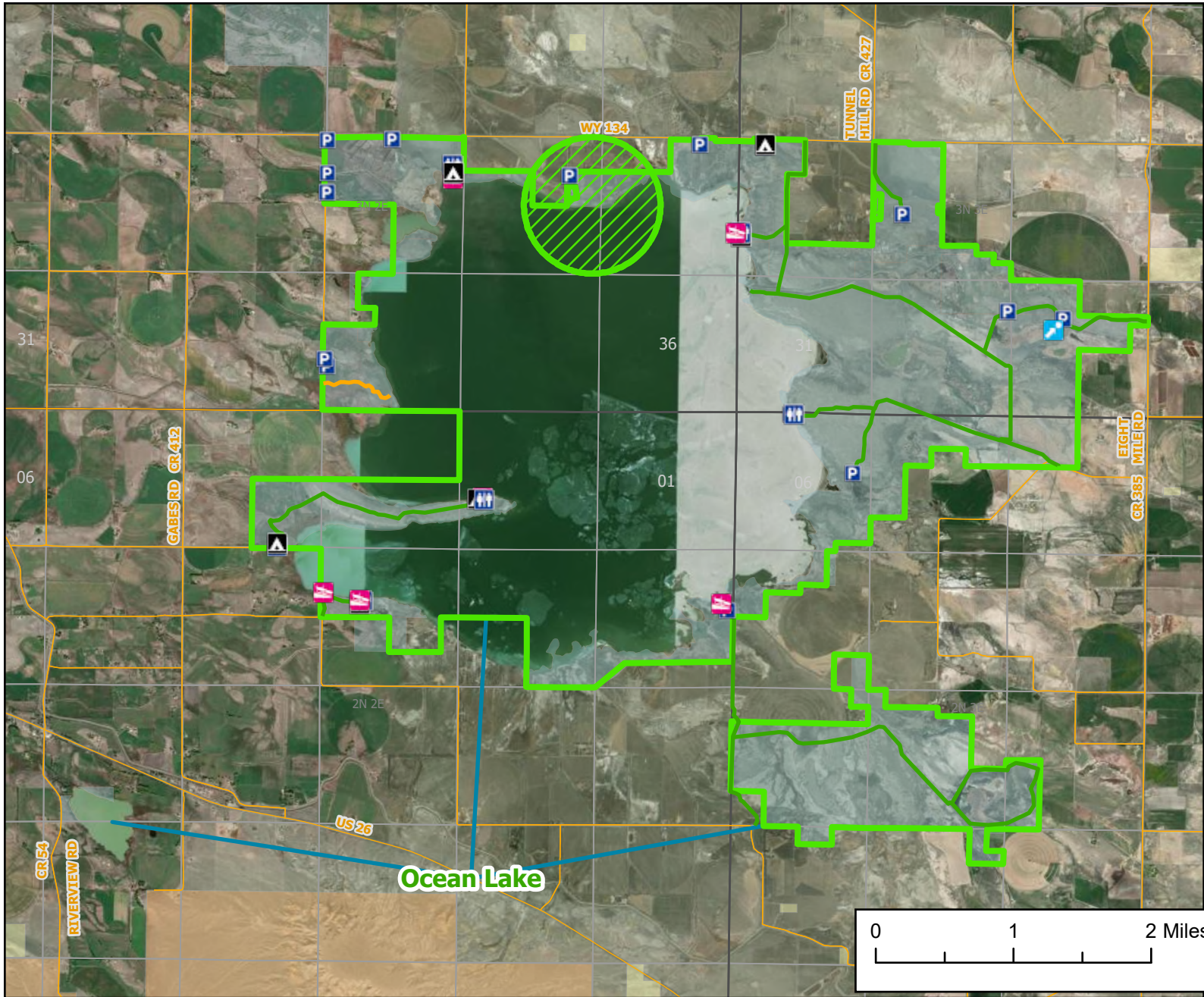




Ocean Lake Wildlife Habitat Management Area

N



Recreation Options: Fishing, Boating, Hunting, Trapping, Camping, Hiking
 Access Dates: Ocean Lake WHMA is open year-round
 Seasonal Closure:
 Access Exceptions:
 Area Regulations: No human presence within 1/2 mile of aerator Dec 15 - March 10
 Shed Limitations:
 Pheasant Release Dates:

This map is for visual use, assistance and general location only, does not represent a survey, and is not to be used for legal conveyance. Hunt Area boundaries are approximate, consult Game and Fish Hunting Regulations for descriptions and restrictions. Access to these private lands for any commercial activity must be gained by contacting the individual landowner(s) directly.